

NEW Smartfill Eco+

emt
Experts in ultrafast SF6
gas analysis and handling



3 Functions in 1 Multi-Gas Filling & Top-Up System

Smartfill Eco+ utilizes unique technology & IOT connectivity to ensure easy, repeatable and auditable gas filling, topping up and leak management tasks

Building on EMT's tried and tested Smartfill technology, the Smartfill Eco+ futureproofs insulating gas fills, top-ups and gas handling for all insulating gas management needs.

Smartfill Eco+ has the unique capability for handling multiple insulating gas:

- SF6
- CO2
- Dry Air

The robust, easy to use Smartfill Eco+ also relieves the headache of reporting on gas usage and handling through onboard datalogging and/or cloud connectivity.

A screenshot of the Smartfill Eco+ control interface. The title is "Mode and Gas Select". It features two rows of buttons. The first row, labeled "Select Mode", has three buttons: "Single TopUp" (blue), "Continuous TopUp" (blue), and "Leak Detection" (blue). The second row, labeled "Select Gas", has three buttons: "SF6" (purple), "DryAir" (light blue), and "CO2" (yellow). Below the buttons, it shows "Selected Mode: LD" and "Selected Gas: CO2". At the bottom, there are "Back" and "Next" buttons.

Features

- Portable, easy to use and fully automated operation
- No need for expensive & cumbersome gas carts – fits on the back seat of your vehicle
- Accurate, reliable & safe filling utilizing mass flow control technology
- SF6, Dry Air & CO2 insulating gas compatibility
- Automatic datalogging for reporting and audit of gas usage
- Cloud connected for remote access, diagnostics and upgrade 24/7 leak management system – no down time
- Enables leak detection in Dry Air insulated equipment
- Smartweigh option for integrated weighing scales

For more information or a demonstration contact
sales@emt.global or visit www.emt.global

Smartfill Eco+ 3 Functions in 1 Multi-Gas Filling & Top-Up System Operating Modes: 3 Functions in 1 System

Function 1: Installation Fill or Single Top-Up Mode

Setup Mode STU - Single TopUp

Selected Gas: DryAir
Pressure: 2.48 Bara

Stop Pressure: 4.5 Bara
Flow Rate: 10.0 Kg/h (max 15.52)
Start Delay: 60 sec (10 - 3600)

Back Start

Single Top-up (STU) Mode provides safe, repeatable and auditable fills or top-ups of SF6, CO2 or Dry Air systems without the need for gas carts or weighing scales.

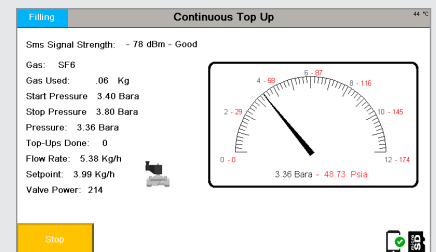
Simply type in the target pressure you want to achieve and press "Start". The Smartfill Eco+ fills the system and provides a fully auditable report of date, time and amount of gas delivered to your desired pressure

Function 2: Leak Management & Continuous Top-Up Mode

When critical assets leak, the down time and cost associated with multiple visits and top-ups can be huge. The Leak Management Continuous Top-Up Mode in the Smartfill Eco+ solves this issue.

Monitoring your asset pressure 24/7/365, the Smartfill Eco+ delivers gas to the system as it is required automatically in small doses, ensuring 100% up time and reduced insulating gas leakage rates.

Every top-up is recorded providing a traceable report of gas used once the asset is repaired.



Function 3: SmartDose Dry Air Leak Detection

Setup Leak Detection

Current Pressure: 2.27 Bara
Safety Pressure Limit: 5.0 Bara
Temperature: 20.0 DegC
Density Dry Air: 2.70 Kg/m3
Volume GIS: 1.0 m3
Total Weight DryAir: 2.70 Kg
Add % CO2: 1.0 % weight
Amount CO2 to Add: 00.03 Kg
Start Delay: 10 sec

Back Start

Finding leaks in Dry Air assets is an industry wide issue... now solved using the EMT Smartfill Eco+

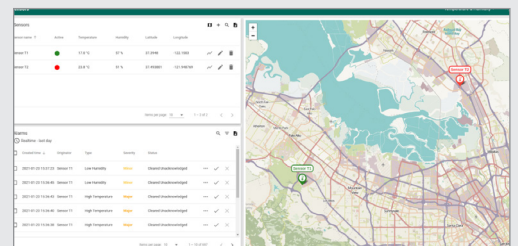
Using SmartDose technology in the Smartfill Eco+, and our new Leak Hunter Pro, the combination of EMT technologies allows for detection of Dry Air leaks as low as 6x10⁻⁶ mbar l/s without de-energising the asset

Cloud Reporting & Auditability

EMT Smartfill Eco+ is now IOT connected...

The optional upgrade allows for reporting and real time assessment of the Smartfill Eco+ during its deployment.

Real time access to top-up data, current asset pressure and notifications of system issues ensures maintenance engineers are always informed regarding their asset health over large geographies if required.



For details of your local EMT distributor, for further information on our products or to request a demonstration please contact us:

Energy Maintenance Technologies Ltd | Unit 7 Marston Business Park | Lower Hazeldines | Marston Moretaine
| Bedfordshire | MK43 0XT | United Kingdom | Email: sales@emt.global | www.emt.global



MKT23-0324